

OUTPATIENT/AMBULATORY CARE CENTER

# Nebraska Medicine, Lauritzen Outpatient and Fritch Surgery Center

Omaha, Neb.

SUBMITTED BY: RDG PLANNING &amp; DESIGN (DES MOINES, IOWA, AND OMAHA, NEB.) AND HOK (ST. LOUIS)



**PROJECT CATEGORY:**  
New construction

**CHIEF ADMINISTRATOR:**  
Rosanna Morris, interim CEO  
(through project completion)  
and Daniel J. DeBehnke, CEO  
(July 2016 – Present)

**FIRMS:**  
RDG Planning & Design,  
www.rdgusa.com;  
HOK, www.hok.com

**DESIGN TEAM:**  
RDG Planning & Design  
(architect of record, interior  
designer, and medical  
documentation specialist);  
HOK (programmer and medical  
planner); MCL Construction  
(construction manager); SES  
Engineering (MEP engineer);  
Thompson, Dreessen & Dörner  
Inc. (structural engineer);  
Olsson Associates (landscape  
architect and civil engineer);  
ESI Engineering (vibration  
consultant); Nebraska Medicine  
and University of Nebraska  
Medical Center (owner)

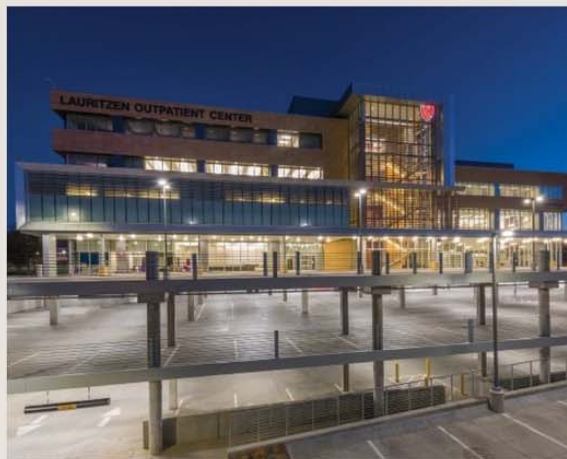
**PHOTOGRAPHY:**  
© Architectural Photography Inc.

**TOTAL BUILDING AREA (SQ.  
FT.):**  
234,000

**CONSTRUCTION COST/SQ. FT.:**  
\$244

**TOTAL CONSTRUCTION COST  
(EXCLUDING LAND):**  
\$57 million

**COMPLETED:**  
November 2016



The Lauritzen Outpatient and Fritch Surgery Center is a dynamic outpatient surgical center and research facility designed to serve Nebraska Medicine's surgery-based clinical functions. A primary planning precept for the project included delivering services to the patient wherever possible. The building includes three floors of ambulatory patient specialty services, including lab, pharmacy, imaging, and rehabilitation. The fourth floor of the building is dedicated to top-level orthopedic research, and two levels of parking are included below grade. The building is also connected via skywalk to other areas of the campus.

The building is woven together by two major design concepts of "suture" as connection and "dressing" as protection. These concepts drove building design decisions, wrapping from the exterior to the interior. The design features natural light with fritted windows and sunscreens that moderate heat load while brightening waiting areas and public spaces on all four floors. Owner and user input through a 3P design process allowed for an efficient and flexible layout among all clinic specialties, which helps reduce wait times and provides easy access to ambulatory services.

The wrapping or suturing of wood panels creates a dynamic ceiling system and linear quality to help guide patients to their destinations. Nodes of color accents at outside corners of departments serve as intuitive wayfinding and the overall material palette is clean, sophisticated, and soft. This one-stop shop healthcare facility is convenient for users, highly efficient, and aesthetically pleasing.

